

ATTENTION! T-Mobile Sales Teams

If you have any customers interested in purchasing the **Franklin T9 or T10 Hotspots** through TMO, we have some incredible offers for you.

Take a look at the options below to bundle a **complimentary Pintrac MDM license**, providing a completely free addition for your valued customers!

Why take advantage of a free 1 Year MDM Software Bundle?



Simplify **hotspot management** with a **single dashboard**, allowing easy control over all your customer hotspots. This alone is a valuable benefit for deployment



Empower customers with an **MDM portal to effortlessly manage their devices**. They gain access to a comprehensive set of settings, rules, and alerts that can be applied to individual devices or groups.

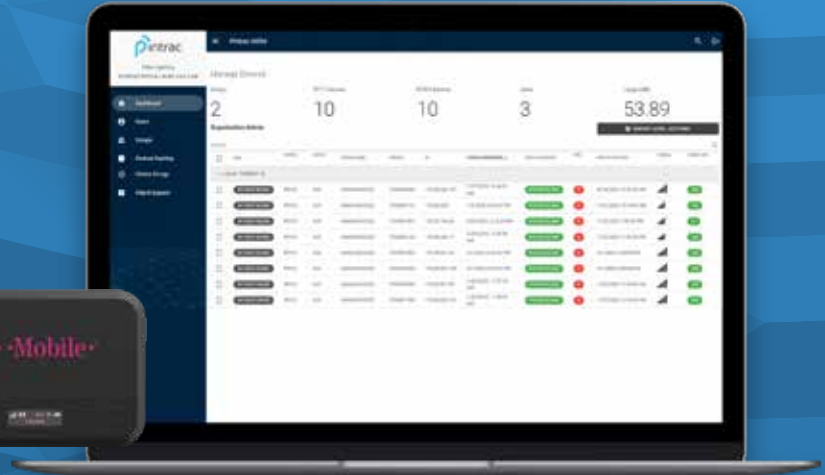


No cost to the customer. There's simply no reason to miss out on this opportunity. First Call Wireless provides MDM portal training and assists customers in setting up their desired settings, rules, and alerts.

Pintrac MDM

4G Device Management
Made Simple

Compatible with Franklin T9
or T10 Mobile Hotspots



Pintrac MDM is the ultimate solution for optimizing the performance and security of Franklin 4G Mobile Hotspots. Seamlessly manage connectivity, data usage, and security configurations from a single platform, ensuring uninterrupted productivity on the go.

- Single-platform management for performance and security
- Remote configuration and troubleshooting for administrators
- Encryption, remote wipe, and compliance enforcement for security
 - Streamlined management and enhanced connectivity
 - Ideal for a productive and protected workforce

1st year for **FREE!** ~~MSRP: \$15/year~~



Free Customer Set-Up
and Configuration of customer Pintrac Profile

Offer valid through 06/30/2024

Valid with any Rate Plan of \$10 or higher | *Offer valid with Partner Teaming Lead registered to First Call Wireless



888-728-9473



sales@firstcallwireless.com

T T-MOBILE
FOR BUSINESS
ELITE PARTNER

Feature Comparison

JEXtream
MDM

intrac
Mobile Device Management

Enable/Disable and Display Control for Guest SSID and PWD	✓	
Control the Number of Connections for Both Main Guest WiFi	✓	
Set Up Email Alerts for Data Overages	✓	
Choose 2.4GHz, 5GHz, or Both on Main and Guest WiFi	✓	
See Device Online/Offline Status	✓	
View Connected Devices	✓	
Disable the Display for the Web UI URL	✓	
View the Battery Level	✓	
Control the Power Bank/External Battery Limits and Settings	✓	
Add a Device Type and Name	✓	
Automatic Bulk Group Configurations When a Device Moves to a Group	✓	
Set Modem Connection	✓	
Option for Yearly Data Usage (Resets Once a Year)	✓	
Set APN in Bulk on Initial Upload and Request APN Changes On Demand	✓	
DHCP Range Option and Default Gateway	✓	
Two Factor Authentication Log In	✓	
Visual Alert When Set Data is Reached		✓
Organization and Group Management		✓
Admin User Access	✓	✓
Easy to View Dashboard Showing All Devices	✓	✓
Main Wi-Fi settings - SSID/Password	✓	✓
Display Control For Data usage, Total data available	✓	✓
Display Control For SSID, PWD (Main)	✓	✓
Disable Factory Reset	✓	✓
Password Protect and/or Disable the Web UI	✓	✓
Device Connection management (Wi-Fi + USB , Wi-Fi only, USB only)	✓	✓
Control Number of Connections (Main WiFi)	✓	✓
Device description (Notes)	✓	✓
Port control (Block, Allow)	✓	✓
IP Port forwarding/filtering	✓	✓
Mac ID pairing (up to 10 devices)	✓	✓
Time of Day access	✓	✓
DNS support	✓	✓
Security/Firewall Protection	✓	✓
Daily Data Usage Update	✓	✓
Set Monthly Data Usage and Reset Date	✓	✓