

# ATTENTION! T-Mobile Sales Teams

If you have any customers interested in purchasing the **Franklin T9 or T10 Hotspots** through TMO, we have some incredible offers for you.

Take a look at the options below to bundle a **complimentary Pintrac MDM license**, providing a completely free addition for your valued customers!

## Why take advantage of a free 1 Year MDM Software Bundle?



Simplify **hotspot management** with a **single dashboard**, allowing easy control over all your customer hotspots. This alone is a valuable benefit for deployment



Empower customers with an **MDM portal to effortlessly manage their devices**. They gain access to a comprehensive set of settings, rules, and alerts that can be applied to individual devices or groups.

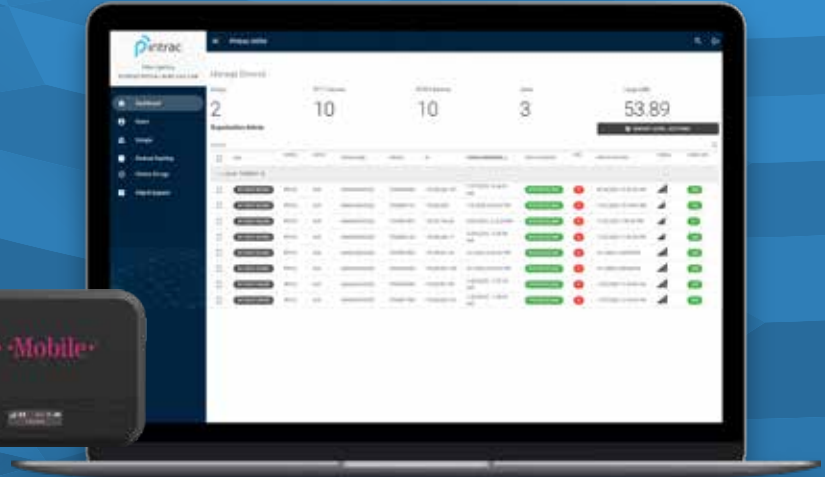


**No cost to the customer.** There's simply no reason to miss out on this opportunity. First Call Wireless provides MDM portal training and assists customers in setting up their desired settings, rules, and alerts.

# Pintrac MDM

4G Device Management  
*Made Simple*

Compatible with Franklin T9  
or T10 Mobile Hotspots



**Pintrac MDM** is the ultimate solution for optimizing the performance and security of Franklin 4G Mobile Hotspots. Seamlessly manage connectivity, data usage, and security configurations from a single platform, ensuring uninterrupted productivity on the go.

- Single-platform management for performance and security
- Remote configuration and troubleshooting for administrators
- Encryption, remote wipe, and compliance enforcement for security
  - Streamlined management and enhanced connectivity
  - Ideal for a productive and protected workforce

1st year for **FREE!** ~~MSRP: \$15/year~~



Free Customer Set-Up  
and Configuration of customer Pintrac Profile

Offer valid through 03/31/2024

Valid with any Rate Plan of \$10 or higher | \*Offer valid with Partner Teaming Lead registered to First Call Wireless



888-728-9473



sales@firstcallwireless.com

**T** T-MOBILE  
FOR BUSINESS  
ELITE PARTNER

# Feature Comparison

JEXtream  
MDM

intrac  
Mobile Device Management

|   |   |   |
|---|---|---|
| Enable/Disable and Display Control for Guest SSID and PWD           | ✓ |   |
| Control the Number of Connections for Both Main Guest WiFi          | ✓ |   |
| Set Up Email Alerts for Data Overages                               | ✓ |   |
| Choose 2.4GHz, 5GHz, or Both on Main and Guest WiFi                 | ✓ |   |
| See Device Online/Offline Status                                    | ✓ |   |
| View Connected Devices  | ✓ |   |
| Disable the Display for the Web UI URL                              | ✓ |   |
| View the Battery Level  | ✓ |   |
| Control the Power Bank/External Battery Limits and Settings         | ✓ |   |
| Add a Device Type and Name  | ✓ |   |
| Automatic Bulk Group Configurations When a Device Moves to a Group  | ✓ |   |
| Set Modem Connection  | ✓ |   |
| Option for Yearly Data Usage (Resets Once a Year)                   | ✓ |   |
| Set APN in Bulk on Initial Upload and Request APN Changes On Demand | ✓ |   |
| DHCP Range Option and Default Gateway                               | ✓ |   |
| Two Factor Authentication Log In                                    | ✓ |   |
| Visual Alert When Set Data is Reached                               |   | ✓ |
| Organization and Group Management                                   |   | ✓ |
| Admin User Access   | ✓ | ✓ |
| Easy to View Dashboard Showing All Devices                          | ✓ | ✓ |
| Main Wi-Fi settings - SSID/Password                                 | ✓ | ✓ |
| Display Control For Data usage, Total data available                | ✓ | ✓ |
| Display Control For SSID, PWD (Main)                                | ✓ | ✓ |
| Disable Factory Reset   | ✓ | ✓ |
| Password Protect and/or Disable the Web UI                          | ✓ | ✓ |
| Device Connection management (Wi-Fi + USB , Wi-Fi only, USB only)   | ✓ | ✓ |
| Control Number of Connections (Main WiFi)                           | ✓ | ✓ |
| Device description ( Notes)   | ✓ | ✓ |
| Port control (Block, Allow)   | ✓ | ✓ |
| IP Port forwarding/filtering  | ✓ | ✓ |
| Mac ID pairing (up to 10 devices)                                   | ✓ | ✓ |
| Time of Day access  | ✓ | ✓ |
| DNS support   | ✓ | ✓ |
| Security/Firewall Protection  | ✓ | ✓ |
| Daily Data Usage Update   | ✓ | ✓ |
| Set Monthly Data Usage and Reset Date                               | ✓ | ✓ |